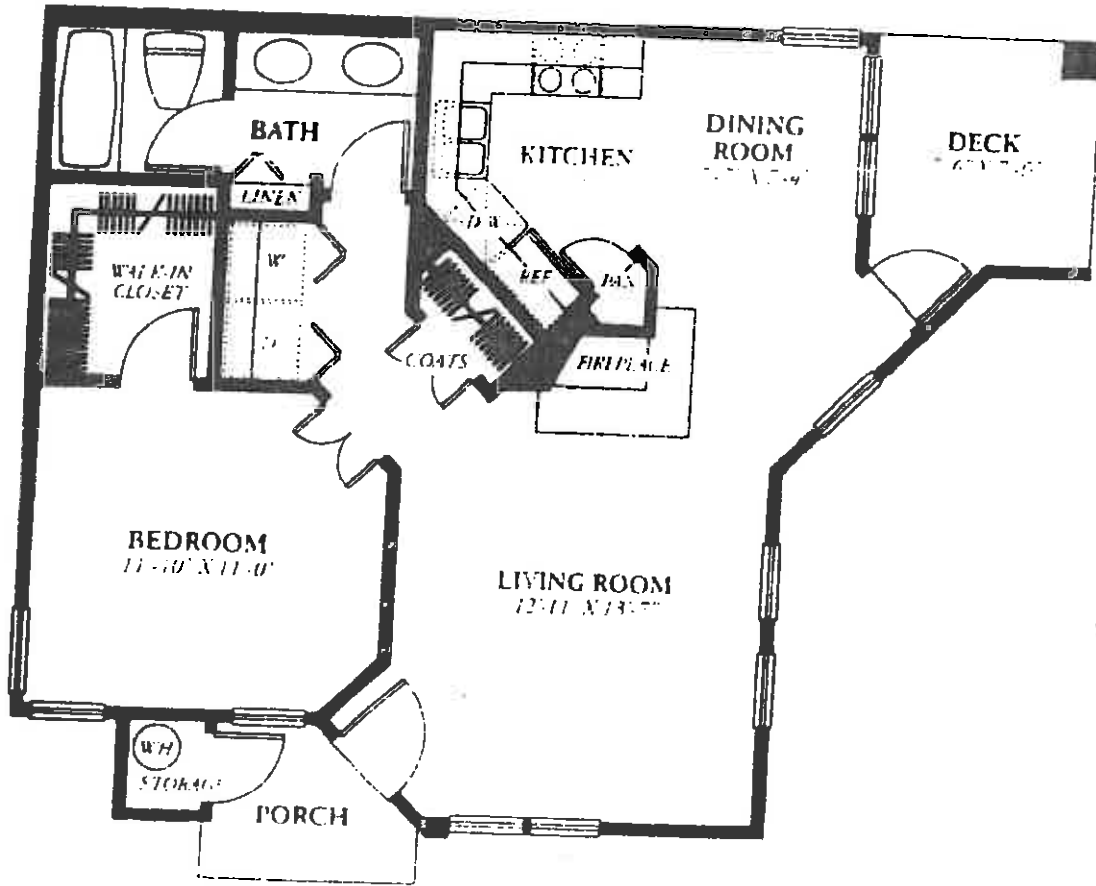




VENTANA CANYON VIEW



The Romero APPROXIMATELY 716 SQ. FT.

(32 Units)

A covered entrance with storage closet opens to a spacious living room with charming, wood-burning fireplace, windows and unique, angled walls. A roomy chef's kitchen with convenient pantry overlooks the dining area, which provides easy access to the sunny deck. The comfortable bedroom features an outstanding walk-in closet. The roomy, compartmentalized bath features a vanity with dual sinks. A convenient utility area offers space for a full-size washer and dryer.

6655 NORTH CANYON CREST DRIVE, TUCSON, ARIZONA 85750

Illustrations are artist's renderings and may vary from actual plans. Specifications subject to change without notice or obligation. Consult sales associate for details.

