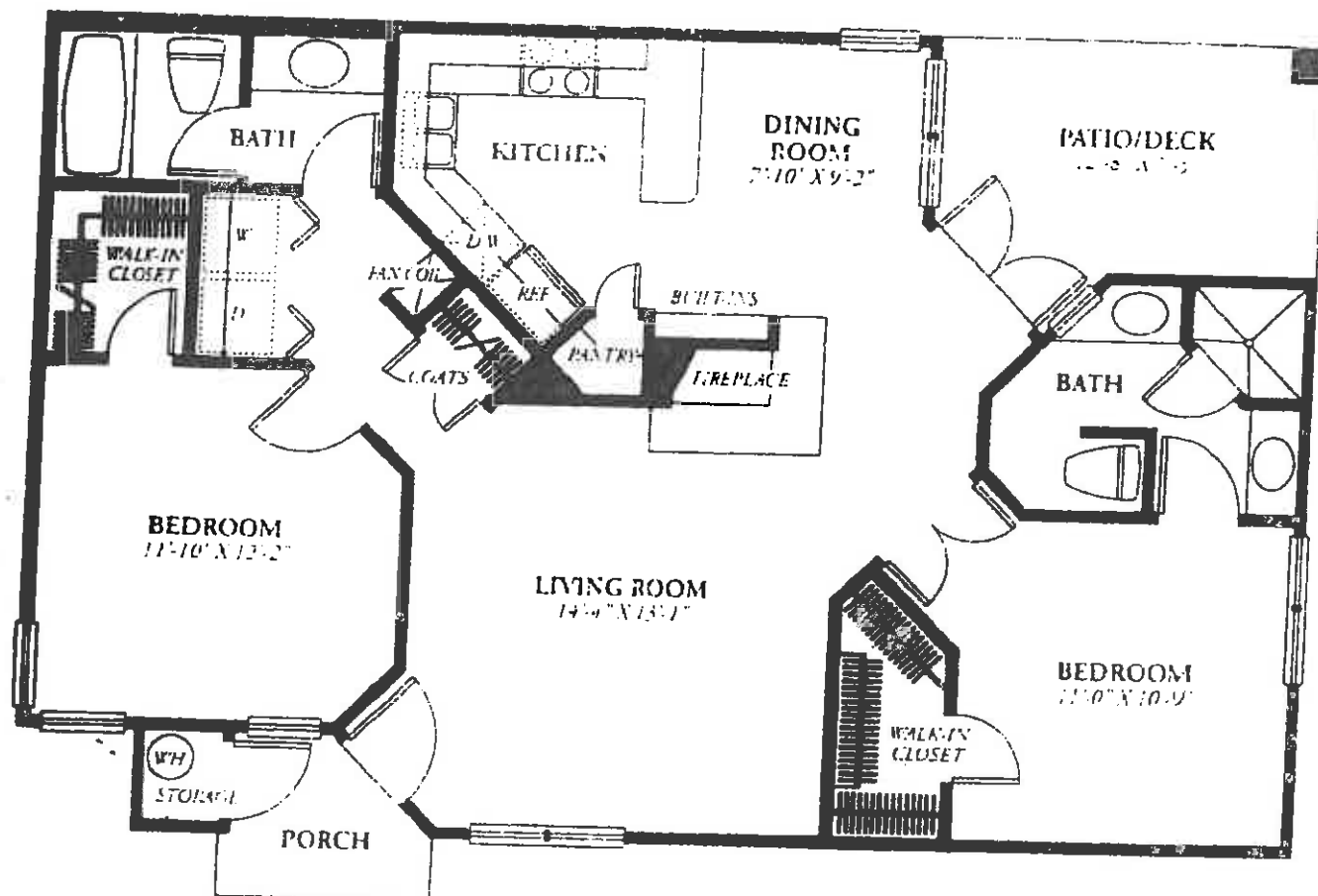




VENTANA CANYON VIEW



The Sycamore

APPROXIMATELY 1,056 SQ. FT.

This spacious, two-bedroom home offers a comfortable bath with tub and a second, large bath with dual sinks and shower stall. Two bedrooms feature generous walk-in closets. The gracious living room with wood-burning fireplace is ideal for entertaining. Angled walls provide a direct view of the sunny patio/deck from the front door. The chef's kitchen with pantry includes abundant counter space, and overlooks the cheerful dining room, which provides direct patio/deck access. The covered porch features a handy storage closet, while a convenient laundry area provides space for a full-size washer and dryer.

(60 Units)

6666 NORTH CANYON CREST DRIVE, TUCSON, ARIZONA 85750

Illustrations are artist's renderings and may vary from actual plan. Specifications subject to change without notice or obligation. Consult sales associate for details.

